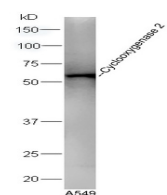


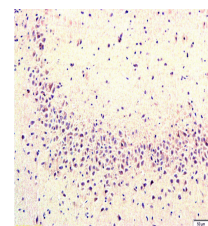
Product Datasheet

LAMP2 Polyclonal Antibody GRP471

| | |
|----------------------------|--|
| Description | Implicated in tumor cell metastasis. May function in protection of the lysosomal membrane from autodigestion, maintenance of the acidic environment of the lysosome, adhesion when expressed on the cell surface (plasma membrane), and inter- and intracellular signal transduction. Protects cells from the toxic effects of methylating mutagens. |
| Species/Host | Rabbit |
| Reactivity | Human, Mouse, Rat |
| Conjugation | Unconjugated |
| Tested Applications | FC, IHC-P, WB |
| Immunogen | KLH conjugated synthetic peptide derived from human LAMP2 (public_immunogen_range: 305-355/410) |
| Form/Appearance | Aqueous buffered solution containing 1% BSA, 50% glycerol and 0.09% sodium azide. |
| Concentration | 1ug/ul |
| Storage | Store at -20°C for 12 months. |
| Note | For research use only. |
| Isotype | IgG |
| Clonality | Polyclonal |
| Purity | Purified by Protein A. |
| Uniprot ID | P13473 |
| Entrez | 3920 |
| Dilution Range | WB: 1:300-1000, FC: 1:20-100, IHC-P: 1:200-400 |



WB of GRP471



IHC-P of GRP471