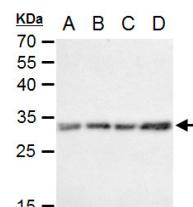


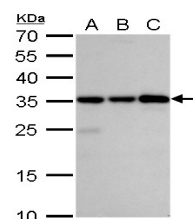
Product Datasheet

Caspase 3 antibody GRP46

Description	This gene encodes a protein which is a member of the cysteine-aspartic acid protease (caspase) family. Sequential activation of caspases plays a central role in the execution-phase of cell apoptosis. Caspases exist as inactive proenzymes which undergo proteolytic processing at conserved aspartic residues to produce two subunits, large and small, that dimerize to form the active enzyme. This protein cleaves and activates caspases 6, 7 and 9, and the protein itself is processed by caspases 8, 9 and 10. It is the predominant caspase involved in the cleavage of amyloid-beta 4A precursor protein, which is associated with neuronal death in Alzheimer's disease. Alternative splicing of this gene results in two transcript variants that encode the same protein. [provided by RefSeq]
Species/Host	Rabbit
Reactivity	Human, Mouse, Rat
Conjugation	Unconjugated
Tested Applications	ICC, IF, IHC-Fr, IHC-P, IP, WB
Immunogen	Recombinant protein encompassing a sequence within the center region of human Caspase 3. The exact sequence is proprietary.
Form/Appearance	Liquid: 1XPBS, 20% Glycerol (pH7). 0.025% ProClin 300 was added as a preservative.
Concentration	0.61 mg/ml
Storage	Store as concentrated solution. Centrifuge briefly prior to opening vial. For short-term storage (1-2 weeks), store at 4°C. For long-term storage, aliquot and store at -20°C or below. Avoid multiple freeze-thaw cycles.
Note	For research use only.
Isotype	IgG
Clonality	Polyclonal
Purity	Purified by antigen-affinity chromatography.
Uniprot ID	P42574
Entrez	836
Dilution Range	WB: 1:500-1:10000, ICC: 1:100-1:1000, IHC-P: 1:100-1:1000, IP: 1:100-1:500



Caspase 3 antibody detects Caspase 3 protein by western blot analysis. A. 30 ?g C8D30 whole cell extract. B. 30 ?g NIH-3T3 whole cell extract. C. 30 ?g Raw264.7 whole cell extract. D. 30 ?g C2C12 whole cell extract. 12% SDS-PAGE Caspase 3 antibody (GRP4)



Caspase 3 antibody detects Caspase 3 protein by western blot analysis. A. 30 ?g Jurkat whole cell lysate/extract. B. 30 ?g Raji whole cell lysate/extract. C. 30 ?g NCI-H929 whole cell lysate/extract. 12%