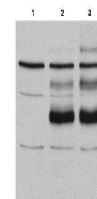


Product Datasheet

c-Myb (RABBIT) Antibody GRP3643

Description	Anti-c-Myb (RABBIT) Antibody
Species/Host	Rabbit
Reactivity	Mouse, Monkey
Conjugation	Unconjugated
Tested Applications	ELISA, WB
Form/Appearance	0.02 M Potassium Phosphate, 0.15 M Sodium Chloride, pH 7.2
Concentration	1.0 mg/mL
Note	For research use only.
Isotype	IgG
Clonality	Polyclonal
Source	This affinity purified antibody was prepared from whole rabbit serum produced by repeated immunizations with a peptide corresponding to an internal portion of mouse c-Myb protein.
Uniprot ID	P06876
Entrez	126961
Dilution Range	ELISA: 1:10,000 - 1:25,000, Western Blot: 1:250 - 1:500



Anti-C-Myb Antibody -
Western
Blot