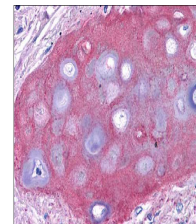


Product Datasheet

Collagen Type II (RABBIT) Antibody GRP3333

Description	Anti-Collagen Type II (RABBIT) Antibody
Species/Host	Rabbit
Reactivity	Human, Mouse, Rat, Bovine, Sheep
Conjugation	Unconjugated
Tested Applications	ELISA, IHC-P, IP, WB
Form/Appearance	0.02 M Potassium Phosphate, 0.15 M Sodium Chloride, pH 7.2
Concentration	1.0 mg/mL
Note	For research use only.
Isotype	IgG
Clonality	Polyclonal
Source	Collagen Type II from human knee cartilage and bovine nasal cartilage.
Uniprot ID	P02458
Entrez	126961
Dilution Range	ELISA: 1:5,000 - 1:50,000,Immunochemistry: 1:50 - 1:400,Immunoprecipitation: 1:100,Western Blot: 1:1,000 - 1:10,000



Anti-Collagen II Antibody –
Immunohistochemistry