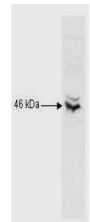


Product Datasheet

CREB-1 (p43) (RABBIT) Antibody GRP1521

Species/Host	Rabbit
Reactivity	Human, Mouse, Rat
Conjugation	Unconjugated
Tested Applications	ELISA, SDS-PAGE, WB
Form/Appearance	0.02 M Potassium Phosphate, 0.15 M Sodium Chloride, pH 7.2
Concentration	2.56 mg/ml
Note	For research use only.
Isotype	Antiserum
Clonality	Polyclonal
Source	CREB-1 (p43) peptide corresponding to a region near the N-terminus of the human protein, conjugated to Keyhole Limpet Hemocyanin (KLH).
Uniprot ID	P16220
Entrez	3297
Dilution Range	ELISA: 1:5,000 - 1:25,000, Gel Shift: 0.5 to 1.0 uL per assay, Western Blot: 1:500 - 1:1,000

Application Notes Anti-CREB-1 Antibody is suitable for use in SDS, Western Blot, and ELISA assays. Specific conditions for reactivity should be optimized by the end user.



Anti-CREB Antibody -
Western
Blot