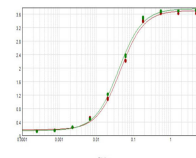


Product Datasheet

CYANINE (SHEEP) Antibody GRP4094

Description	Anti-CYANINE (SHEEP) Antibody
Species/Host	Sheep
Conjugation	Unconjugated
Tested Applications	ELISA, IHC-P, WB
Form/Appearance	0.02 M Potassium Phosphate, 0.15 M Sodium Chloride, pH 7.2
Concentration	1.1 mg/mL
Note	For research use only.
Isotype	IgG
Clonality	Polyclonal
Source	A mixture of Cy3 and Cy5 conjugated KLH
Entrez	2175
Dilution Range	ELISA: 1:10,000 - 1:50,000, Immunochemistry: User Optimized, Western Blot: 1:1,000 - 1:5,000
Application Notes	Anti-Cyanine (Sheep) Antibody is suitable for immunoprecipitation, immunodiffusion, conjugation and most immunological methods requiring lot-to-lot consistency, high titer and specificity.



ELISA of Sheep anti-Cyanine Antibody