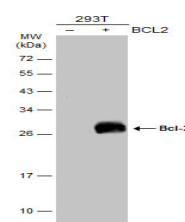


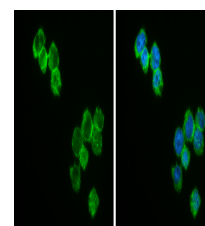
## Product Datasheet

### Bcl-2 antibody [N1N2], N-term GRP3

<b>Description</b>	This gene encodes an integral outer mitochondrial membrane protein that blocks the apoptotic death of some cells such as lymphocytes. Constitutive expression of BCL2, such as in the case of translocation of BCL2 to Ig heavy chain locus, is thought to be the cause of follicular lymphoma. Two transcript variants, produced by alternate splicing, differ in their C-terminal ends. [provided by RefSeq]
<b>Species/Host</b>	Rabbit
<b>Reactivity</b>	Human, Mouse, Rat, Zebrafish
<b>Conjugation</b>	Unconjugated
<b>Tested Applications</b>	ICC, IF, IHC-P, WB
<b>Immunogen</b>	Carrier-protein conjugated synthetic peptide encompassing a sequence within the N-terminus region of human Bcl-2. The exact sequence is proprietary.
<b>Form/Appearance</b>	Liquid: 1XPBS, 1% BSA, 20% Glycerol (pH7). 0.025% ProClin 300 was added as a preservative.
<b>Concentration</b>	0.48 mg/ml
<b>Storage</b>	Store as concentrated solution. Centrifuge briefly prior to opening. For short-term storage (1-2 weeks), store at 4°C. For long-term storage, aliquot and store at -20°C or below. Avoid multiple freeze-thaw cycles.
<b>Note</b>	For research use only.
<b>Isotype</b>	IgG
<b>Clonality</b>	Polyclonal
<b>Purity</b>	Purified by antigen-affinity chromatography.
<b>Uniprot ID</b>	<b>P10415</b>
<b>Entrez</b>	<b>596</b>
<b>Dilution Range</b>	WB: 1:500-1:3000, ICC: 1:100-1:1000, IHC-P: 1:100-1:1000



Non-transfected (â€“) and transfected (+) 293T whole cell extracts (30 µg) were separated by 12% SDS-PAGE, and the membrane was blotted with Bcl-2 antibody [N1N2], N-term (GRP455) diluted at 1:500. The HRP-conjugated anti-rabbit IgG antibody was used



Bcl-2 antibody [N1N2], N-term detects Bcl-2 protein at cytoplasm and nucleus by immunofluorescent analysis. Sample: THP-1 cells were fixed in 4% paraformaldehyde at RT for 15 min. Green: Bcl-2 stained by Bcl-2 antibody [N1N2], N-term (GRP455) diluted at 1:5