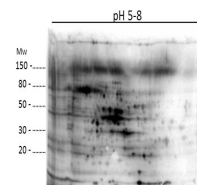


Product Datasheet

E.Coli Combined Host Cell Protein (HCP) Antibody GRP2396

Description	Anti-E.Coli Combined Host Cell Protein (HCP) Antibody
Species/Host	Rabbit
Reactivity	E.Coli
Conjugation	Unconjugated
Tested Applications	ELISA, WB
Form/Appearance	0.02 M Potassium Phosphate, 0.15 M Sodium Chloride, pH 7.2
Concentration	1.02mg/mL
Note	For research use only.
Isotype	IgG
Clonality	Polyclonal
Source	Anti-Host Cell Proteins Antibody was prepared by repeated immunizations with a full range of high molecular weight (HMW) and low molecular weight (LMW) proteins from E.Coli (BL21).
Entrez	7018
Dilution Range	ELISA: 1:1000-1:2000,Western Blot: 1:500-1:1000
Application Notes	Anti-Host Cell Proteins Antibody detects over 300 E.coli proteins and is suitable for western blotting and ELISA.



2D Western Blot of E.coli
Host
Cell Protein.