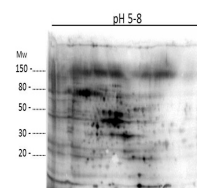


Product Datasheet

E.coli Combined Host Cell Protein (HCP) Antibody GRP2397

| | |
|----------------------------|--|
| Description | Anti-E.coli Combined Host Cell Protein (HCP) Antibody |
| Species/Host | Rabbit |
| Reactivity | E.Coli |
| Conjugation | Unconjugated |
| Tested Applications | ELISA, WB |
| Form/Appearance | 0.02 M Potassium Phosphate, 0.15 M Sodium Chloride, pH 7.2 |
| Concentration | 0.82 mg/mL |
| Note | For research use only. |
| Isotype | IgG |
| Clonality | Polyclonal |
| Source | Anti-Host Cell Proteins Antibody was prepared by repeated immunizations with a full range of high molecular weight (HMW) and low molecular weight (LMW) proteins from E.Coli (BL21). |
| Entrez | 7018 |
| Dilution Range | ELISA: 1:1000-1:2000,Western Blot: 1:500-1:1000 |
| Application Notes | Anti-Host Cell Proteins Antibody detects over 300 E.coli proteins and is suitable for western blotting and ELISA. |



2D Western Blot of E.coli
Host
Cell Protein.