

Product Datasheet

E.Coli Combined Host Cell Protein Biotin Conjugated (HCP) Antibody GRP2471

Description Anti-E.Coli Combined Host Cell Protein Biotin Conjugated (HCP) Antibody

Species/Host Rabbit

Reactivity E.Coli

Conjugation Biotin

Tested Applications ELISA, WB

Form/Appearance 0.02 M Potassium Phosphate, 0.15 M Sodium Chloride, pH 7.2

Concentration 1.0 mg/mL

Note For research use only.

Isotype IgG

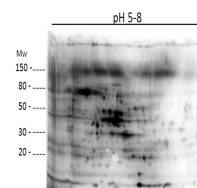
Clonality Polyclonal

Source Anti-Host Cell Proteins Antibody was prepared by repeated immunizations with a full range of high molecular weight (HMW) and low molecular weight (LMW) proteins from E.Coli (BL21).

Entrez **56897**

Dilution Range ELISA: 1:1000-1:2000, Fluorochrome: 10-20, Western Blot: 1:500-1:1000

Application Notes Anti-Host Cell Proteins Antibody detects over 300 E.coli proteins and is suitable for western blotting and ELISA.



2D Western Blot of E.coli Host Cell Protein.