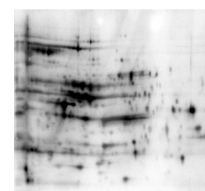


Product Datasheet

E.Coli Host Cell Protein (HCP) (RABBIT) Antibody GRP1601

Species/Host	Rabbit
Reactivity	E.Coli
Conjugation	Unconjugated
Tested Applications	ELISA, WB
Form/Appearance	0.02 M Potassium Phosphate, 0.15 M Sodium Chloride, pH 7.2
Concentration	77.5 mg/mL
Note	For research use only.
Isotype	Antiserum
Clonality	Polyclonal
Source	Anti-Host Cell Proteins Antibody was prepared blending antibodies that have been separately developed by repeated immunizations with a mixture of high molecular weight (HMW) and a mixture of low molecular weight (LMW) proteins from E.Coli (BL21).
Entrez	3064
Dilution Range	ELISA: 1:1000-1:2000,Western Blot: 1:500 - 1:1000
Application Notes	Anti-Host Cell Proteins Antibody detects over 300 E.coli proteins and is suitable for western blotting and ELISA.



2D Western Blot of
Anti-HCP
Antibody