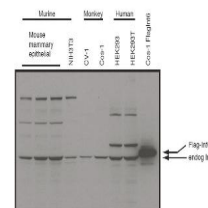


## Product Datasheet

### eIF3S6/Int6 (RABBIT) Antibody GRP3615

<b>Description</b>	Anti-eIF3S6/Int6 (RABBIT) Antibody
<b>Species/Host</b>	Rabbit
<b>Reactivity</b>	Human, Mouse, Monkey
<b>Conjugation</b>	Unconjugated
<b>Tested Applications</b>	ELISA, WB
<b>Form/Appearance</b>	0.02 M Potassium Phosphate, 0.15 M Sodium Chloride, pH 7.2
<b>Concentration</b>	0.8 mg/mL
<b>Note</b>	For research use only.
<b>Isotype</b>	IgG
<b>Clonality</b>	Polyclonal
<b>Source</b>	This affinity purified antibody was prepared from whole rabbit serum produced by repeated immunizations with a synthetic peptide corresponding to a region near the C-terminus of mouse eIF3S6/Int6.
<b>Uniprot ID</b>	<b>P60229</b>
<b>Entrez</b>	<b>209176</b>
<b>Dilution Range</b>	ELISA: 1:80,000, Western Blot: 1:1,000



Anti-eIF3S6/Int6 Antibody - Western Blot