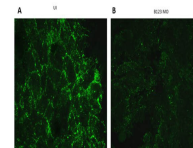


## Product Datasheet

### Ephrin B1, B2, B3 (RABBIT) Antibody GRP3956

<b>Description</b>	Anti-Ephrin B1, B2, B3 (RABBIT) Antibody
<b>Species/Host</b>	Rabbit
<b>Reactivity</b>	Human, Mouse, Frog
<b>Conjugation</b>	Unconjugated
<b>Tested Applications</b>	ELISA, IF, WB
<b>Form/Appearance</b>	0.02 M Potassium Phosphate, 0.15 M Sodium Chloride, pH 7.2
<b>Concentration</b>	1.05mg/mL
<b>Note</b>	For research use only.
<b>Isotype</b>	IgG
<b>Clonality</b>	Polyclonal
<b>Source</b>	Anti-Ephrin B1, B2, B3 antibody was prepared from whole rabbit serum produced by repeated immunizations with a synthetic peptide corresponding to C-terminal portion of human Ephrin B1, B2, B3 conjugated to Keyhole Limpet Hemocyanin (KLH).
<b>Uniprot ID</b>	<b>P52800 mouse B2</b>
<b>Entrez</b>	<b>16197</b>
<b>Dilution Range</b>	ELISA: 1:10,000-50,000,IF Microscopy: 1:5000,Western Blot: 1:1000



Immunofluorescence of  
Rabbit  
Anti-Ephrin B1/B3  
Antibody