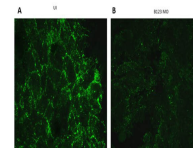


Product Datasheet

Ephrin B1, B2, B3 (RABBIT) Antibody GRP3957

Description	Anti-Ephrin B1, B2, B3 (RABBIT) Antibody
Species/Host	Rabbit
Reactivity	Human, Mouse, Frog
Conjugation	Unconjugated
Tested Applications	ELISA, IF, WB
Form/Appearance	0.02 M Potassium Phosphate, 0.15 M Sodium Chloride, pH 7.2
Concentration	1.05 mg/mL
Note	For research use only.
Isotype	IgG
Clonality	Polyclonal
Source	Anti-Ephrin B1, B2, B3 antibody was prepared from whole rabbit serum produced by repeated immunizations with a synthetic peptide corresponding to C-terminal portion of human Ephrin B1, B2, B3 conjugated to Keyhole Limpet Hemocyanin (KLH).
Uniprot ID	P52800 mouse B2
Entrez	16197
Dilution Range	ELISA: 1:10,000 - 50,000,IF Microscopy: 1:5000,Western Blot: 1:1000



Immunofluorescence of
Rabbit
Anti-Ephrin B1/B3
Antibody