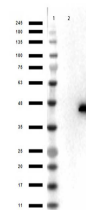


Product Datasheet

ERK2 (MOUSE) Monoclonal Antibody GRP2142

Description	Anti-ERK2 (MOUSE) Monoclonal Antibody
Species/Host	Mouse
Reactivity	Human, Mouse, Rat
Conjugation	Unconjugated
Tested Applications	ELISA, WB
Form/Appearance	0.02 M Potassium Phosphate, 0.15 M Sodium Chloride, pH 7.2
Concentration	1.0 mg/ml
Storage	Store vial at -20 °C prior to opening. This product is stable at 4 °C as an undiluted liquid. For extended storage, aliquot contents and freeze at -20 °C or below. Avoid cycles of freezing and thawing. Dilute only prior to immediate use.
Note	For research use only.
Isotype	IgG
Clonality	Monoclonal
Source	Anti-ERK2 Monoclonal Antibody was produced in mice by repeated immunizations with synthetic peptide corresponding to amino acid residues near an internal region of ERK2 conjugated to KLH.
Clone ID	3H9.A1.A8
Uniprot ID	P28482
Entrez	286887
Dilution Range	ELISA: 1:40,000, Western Blot: 1µg /mL
Application Notes	Anti-ERK 2 (MOUSE) antibody is suitable for use in ELISA and Western Blotting. Specific conditions of reactivity should be optimized by the end user. Expect a band of approximately 41 kDa.



Western Blot of Mouse anti-ERK2 Antibody.