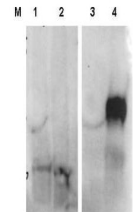


Product Datasheet

Fibroblast Activation Protein (FAP) (RABBIT) Antibody GRP3616

Description	Anti-Fibroblast Activation Protein (FAP) (RABBIT) Antibody
Species/Host	Rabbit
Reactivity	Mouse
Conjugation	Unconjugated
Tested Applications	ELISA, WB
Form/Appearance	0.02 M Potassium Phosphate, 0.15 M Sodium Chloride, pH 7.2
Concentration	1.1 mg/mL
Note	For research use only.
Isotype	IgG
Clonality	Polyclonal
Source	This affinity purified antibody was prepared from whole rabbit serum produced by repeated immunizations with a synthetic peptide corresponding to an internal region of mouse FAP protein.
Uniprot ID	P97321
Entrez	6348
Dilution Range	ELISA: 1:10,000 - 1:20,000, Western Blot: 1:500 to 1:2,000



Anti-FAP Antibody -
Western
Blot