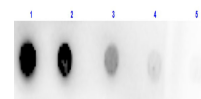


## Product Datasheet

# GLUCOSE OXIDASE (SHEEP) Antibody Peroxidase Conjugated GRP2771

<b>Description</b>	Anti-GLUCOSE OXIDASE (SHEEP) Antibody Peroxidase Conjugated
<b>Species/Host</b>	Sheep
<b>Reactivity</b>	Fungi
<b>Conjugation</b>	HRP
<b>Tested Applications</b>	ELISA, WB
<b>Form/Appearance</b>	0.02 M Potassium Phosphate, 0.15 M Sodium Chloride, pH 7.2
<b>Concentration</b>	1.0 mg/mL
<b>Note</b>	For research use only.
<b>Isotype</b>	IgG
<b>Clonality</b>	Polyclonal
<b>Source</b>	Glucose Oxidase [ <i>Aspergillus niger</i> ]
<b>Uniprot ID</b>	<b>P13006</b>
<b>Entrez</b>	<b>8202</b>
<b>Dilution Range</b>	ELISA: User Optimized, Western Blot: User Optimized



Dot Blot of Sheep Anti-GLUCOSE OXIDASE Antibody Peroxidase Conjugated