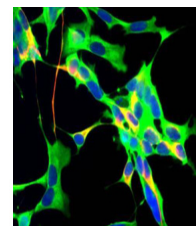


Product Datasheet

Glyceraldehyde-3-Phosphate Dehydrogenase (GAPDH) (Mouse) Monoclonal Antibody GRP2081

Description	Anti-Glyceraldehyde-3-Phosphate Dehydrogenase (GAPDH) (Mouse) Monoclonal Antibody
Species/Host	Mouse
Reactivity	Human, Mouse, Rabbit
Conjugation	Unconjugated
Tested Applications	ELISA, IF, IHC-P, IP, WB
Form/Appearance	0.1 M Tris Chloride, 0.5 M Sodium Chloride, pH 8.0
Concentration	1.0 mg/ml
Storage	Store vial at -20 °C prior to opening. This product is stable at 4 °C as an undiluted liquid. For extended storage, aliquot contents and freeze at -20 °C or below. Avoid cycles of freezing and thawing. Dilute only prior to immediate use.
Note	For research use only.
Isotype	IgM
Clonality	Monoclonal
Source	Anti-GAPDH Monoclonal Antibody was produced by repeated immunizations in mice with rabbit GAPDH protein.
Clone ID	33F2.C8.G6.E3
Uniprot ID	P46406
Entrez	4800
Dilution Range	ELISA: User Optimized, Immunocytochemistry: User Optimized, IF Microscopy: 1:100, Immunoprecipitation: User Optimized, Western Blot: 1:1,000



Immunofluorescence
Microscopy
of Mouse Anti-GAPDH
antibody