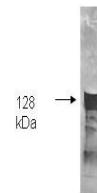


Product Datasheet

GLYCEROL KINASE (Cellulomonas species) (GOAT) Antibody GRP1831

Species/Host	Goat
Reactivity	Protein
Conjugation	Unconjugated
Tested Applications	ELISA, WB
Form/Appearance	0.02 M Potassium Phosphate, 0.15 M Sodium Chloride, pH 7.2
Concentration	1 mg/ml
Note	For research use only.
Isotype	IgG
Clonality	Polyclonal
Source	Glycerol Kinase [Cellulomonas species]
Uniprot ID	D0VZG4
Entrez	18054
Dilution Range	ELISA: 1,4,000 - 1:20,000,Western Blot: 1:500 - 1:2,000



Anti-Glycerol Kinase
Antibody
- Western Blot