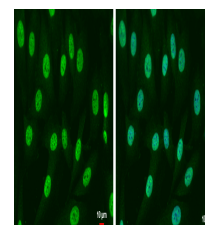


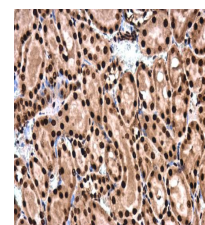
Product Datasheet

SMAD4 antibody GRP56

| | |
|----------------------------|--|
| Description | This gene encodes a member of the Smad family of signal transduction proteins. Smad proteins are phosphorylated and activated by transmembrane serine-threonine receptor kinases in response to TGF-beta signaling. The product of this gene forms homomeric complexes and heteromeric complexes with other activated Smad proteins, which then accumulate in the nucleus and regulate the transcription of target genes. This protein binds to DNA and recognizes an 8-bp palindromic sequence (GTCTAGAC) called the Smad-binding element (SBE). The Smad proteins are subject to complex regulation by post-translational modifications. Mutations or deletions in this gene have been shown to result in pancreatic cancer, juvenile polyposis syndrome, and hereditary hemorrhagic telangiectasia syndrome. [provided by RefSeq] |
| Species/Host | Rabbit |
| Reactivity | Human, Mouse, Rat |
| Conjugation | Unconjugated |
| Tested Applications | ICC, IF, IHC-P, WB |
| Immunogen | Recombinant protein encompassing a sequence within the C-terminus region of human SMAD4. The exact sequence is proprietary. |
| Form/Appearance | Liquid: 1XPBS, 20% Glycerol (pH7). 0.025% ProClin 300 was added as a preservative. |
| Concentration | 0.55 mg/ml |
| Storage | Store as concentrated solution. Centrifuge briefly prior to opening vial. For short-term storage (1-2 weeks), store at 4°C. For long-term storage, aliquot and store at -20°C or below. Avoid multiple freeze-thaw cycles. |
| Note | For research use only. |
| Isotype | IgG |
| Clonality | Polyclonal |
| Purity | Purified by antigen-affinity chromatography. |
| Uniprot ID | Q13485 |
| Entrez | 4089 |
| Dilution Range | WB: 1:500-1:3000, ICC: 1:100-1:1000, IHC-P: 1:100-1:1000 |



SMAD4 antibody detects SMAD4 protein in cytoplasm and nucleus by immunofluorescent analysis. Sample: SK-N-SH cells were fixed in 4% paraformaldehyde at RT for 15 min. Green: SMAD4 protein stained by SMAD4 antibody (GRP508) diluted at 1:500. Blue: Hoechst 333



SMAD4 antibody detects SMAD4 protein in cytoplasm and nucleus in rat kidney by immunohistochemical analysis. Sample: Paraffin-embedded rat kidney. SMAD4 antibody (GRP508) diluted at 1:500