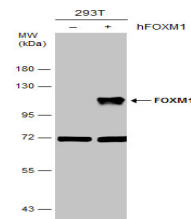


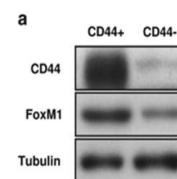
Product Datasheet

FOXM1 antibody [C3], C-term GRP4

Description	FOXM1 antibody [C3], C-term
Species/Host	Rabbit
Reactivity	Human
Conjugation	Unconjugated
Tested Applications	ChIP, WB
Immunogen	Carrier-protein conjugated synthetic peptide encompassing a sequence within the C-terminus region of human FOXM1. The exact sequence is proprietary.
Form/Appearance	Liquid: 1XPBS, 20% Glycerol (pH7). 0.025% ProClin 300 was added as a preservative.
Concentration	1.52 mg/ml
Storage	Store as concentrated solution. Centrifuge briefly prior to opening vial. For short-term storage (1-2 weeks), store at 4°C. For long-term storage, aliquot and store at -20°C or below. Avoid multiple freeze-thaw cycles.
Note	For research use only.
Isotype	IgG
Clonality	Polyclonal
Purity	Purified by antigen-affinity chromatography.
Uniprot ID	Q08050
Entrez	2305
Dilution Range	WB: 1:1000-1:10000



Non-transfected (â€“) and transfected (+) 293T whole cell extracts (30 µg) were separated by 7.5% SDS-PAGE, and the membrane was blotted with FOXM1 antibody [C3], C-term (GRP456) diluted at 1:5000.



From Ju SY et al. Cell Death Dis (2015).
Shown under license agreement via CiteAb

The WB analysis of FOXM1 antibody was published by Ju SY and colleagues in the journal Cell Death Dis in 2015.PMID: 26136074