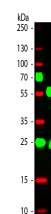


Product Datasheet

GUINEA PIG IgG (H&L) (DONKEY) Antibody Rhodamine Conjugated (Min X Bv Ch Gt Ham Hs Hu Ms Rb Rt & Sh Serum Proteins) GRP4403

Description	Anti-GUINEA PIG IgG (H&L) (DONKEY) Antibody Rhodamine Conjugated (Min X Bv Ch Gt Ham Hs Hu Ms Rb Rt & Sh Serum Proteins)
Species/Host	Donkey
Reactivity	Guinea Pig
Conjugation	Rhodamine (TRITC)
Tested Applications	FC, IF, IHC-P
Form/Appearance	0.02 M Potassium Phosphate, 0.15 M Sodium Chloride, pH 7.2
Concentration	1.0 mg/mL
Note	For research use only.
Isotype	IgG
Clonality	Polyclonal
Source	Guinea Pig IgG whole molecule
Entrez	545
Dilution Range	FLISA: 1:10,000 - 1:50,000, Flow Cytometry: 1:500 - 1:2,500, Fluorochrome: 2.4, IF Microscopy: 1:1,000 - 1:5,000



WB - Guinea Pig IgG (H&L) Antibody Rhodamine Conjugated Pre-Adsorbed