

Product Datasheet

IKB alpha (Ser36) Polyclonal Antibody GRP621

Description Inhibits the activity of dimeric NF-kappa-B/REL complexes by trapping REL dimers in the cytoplasm through masking of their nuclear localization signals. On cellular stimulation by immune and proinflammatory responses, becomes phosphorylated promoting ubiquitination and degradation, enabling the dimeric RELA to translocate to the nucleus and activate transcription.

Species/Host Rabbit

Reactivity Human, Mouse, Rat

Conjugation Unconjugated

Tested Applications IHC-P, WB

Immunogen KLH conjugated synthetic peptide derived from human phospho-IKB alpha (Ser36) (public_immunogen_range: 20-50/317)

Form/Appearance 0.01M TBS (pH7.4) with 1% BSA, 0.03% Proclin300 and 50% Glycerol.

Concentration 1ug/ul

Note For research use only.

Isotype IgG

Clonality Polyclonal

Purity Purified by Protein A.

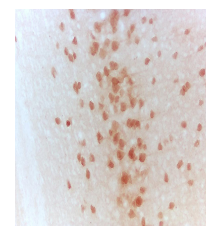
Uniprot ID **P25963**

Entrez **4792**

Dilution Range WB: 1:300-1000, IHC-P: 1:200-400



WB of GRP621



IHC-P of GRP621