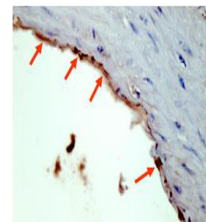


Product Datasheet

HA EPI TOPE TAG (RABBIT) Antibody GRP3392

Description	Anti-HA EPI TOPE TAG (RABBIT) Antibody
Species/Host	Rabbit
Reactivity	Protein
Conjugation	Unconjugated
Tested Applications	ChIP, ELISA, IHC-P, IP, WB
Form/Appearance	0.02 M Potassium Phosphate, 0.15 M Sodium Chloride, pH 7.2
Concentration	1.0 mg/mL
Note	For research use only.
Isotype	IgG
Clonality	Polyclonal
Source	Anti-HA antibody was purified from whole rabbit serum prepared by repeated immunizations with the epitope tag peptide YPYDVPDYA (114-122) from hemagglutinin influenza conjugated to KLH.
Entrez	10055
Dilution Range	ELISA: 1:10,000 - 1:100,000,ChIP: Yes,Immunochemistry: 1:500 - 1:2,000,Immunoprecipitation: Yes,Western Blot: 1:2,000 - 1:10,000



Anti-HA Epitope Tag
Antibody -
Immunohistochemistry