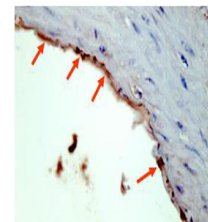


## Product Datasheet

### HA EPI TOPE TAG (RABBIT) Antibody GRP3393

<b>Description</b>	Anti-HA EPI TOPE TAG (RABBIT) Antibody
<b>Species/Host</b>	Rabbit
<b>Reactivity</b>	Protein
<b>Conjugation</b>	Unconjugated
<b>Tested Applications</b>	ChIP, ELISA, IHC-P, IP, WB
<b>Form/Appearance</b>	0.02 M Potassium Phosphate, 0.15 M Sodium Chloride, pH 7.2
<b>Concentration</b>	1.0 mg/mL
<b>Note</b>	For research use only.
<b>Isotype</b>	IgG
<b>Clonality</b>	Polyclonal
<b>Source</b>	Anti-HA antibody was purified from whole rabbit serum prepared by repeated immunizations with the epitope tag peptide YPYDVPDYA (114-122) from hemagglutinin influenza conjugated to KLH.
<b>Entrez</b>	<b>10055</b>
<b>Dilution Range</b>	ELISA: 1:20,000 - 1:150,000,ChIP: Yes,Immunochemistry: 1:500 - 1:2,000,Immunoprecipitation: Yes,Western Blot: 1:2,000 - 1:10,000



Anti-HA Epitope Tag  
Antibody -  
Immunohistochemistry