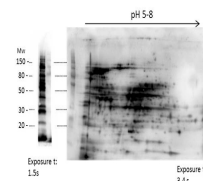


Product Datasheet

High Molecular Weight E.Coli Protein Host Cell Protein (HCP) Antibody GRP1599

Species/Host	Rabbit
Reactivity	E.Coli
Conjugation	Unconjugated
Tested Applications	ELISA, WB
Form/Appearance	0.02 M Potassium Phosphate, 0.15 M Sodium Chloride, pH 7.2
Concentration	77.5 mg/mL
Note	For research use only.
Isotype	Antiserum
Clonality	Polyclonal
Source	Anti-HMW E.Coli Host Cell Proteins Antibody was prepared by repeated immunizations with a mixture high molecular weight (HMW) proteins from E.Coli (BL21).
Entrez	547831
Dilution Range	ELISA: 1:1000-1:2000,Western Blot: 1:500 - 1:1000
Application Notes	Anti-HMW Host Cell Proteins Antibody detects over 250 E.coli HMW proteins and is suitable for western blotting and ELISA.



2D Western Blot of anti-E.coli HMW-HCP antibody