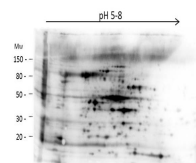


Product Datasheet

High Molecular Weight E.Coli Protein Host Cell Protein (HCP) Antibody GRP2392

Description	Anti-High Molecular Weight E.Coli Protein Host Cell Protein (HCP) Antibody
Species/Host	Rabbit
Reactivity	E.Coli
Conjugation	Unconjugated
Tested Applications	ELISA, WB
Form/Appearance	0.02 M Potassium Phosphate, 0.15 M Sodium Chloride, pH 7.2
Concentration	1.38 mg/ml
Note	For research use only.
Isotype	IgG
Clonality	Polyclonal
Purity	HMW Host Cell Protein A purified antibody is directed against high molecular weight E.coli Host Cell Proteins. The product was purified from monospecific antiserum by Protein A affinity chromatography.
Source	Anti-HMW E.Coli Host Cell Proteins Antibody was prepared by repeated immunizations with a mixture high molecular weight (HMW) proteins from E.Coli (BL21).
Entrez	547831
Dilution Range	ELISA: 1:1000-1:2000, Western Blot: 1:500 - 1:1000
Application Notes	Anti-HMW Host Cell Proteins Antibody detects over 250 E.coli HMW proteins and is suitable for western blotting and ELISA.



2D Western Blot of anti-E.coli High Molecular Weight Host Cell Protein antibody.