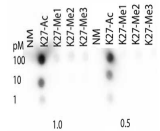


Product Datasheet

Histone H3 [ac Lys27] (RABBIT) Antibody GRP3935

Description	Anti-Histone H3 [ac Lys27] (RABBIT) Antibody
Species/Host	Rabbit
Reactivity	Human, Mouse, Monkey, C. Elegans
Conjugation	Unconjugated
Tested Applications	ELISA, IP, WB
Form/Appearance	0.02 M Potassium Phosphate, 0.15 M Sodium Chloride, pH 7.2
Concentration	0.37 mg/mL
Note	For research use only.
Isotype	IgG
Clonality	Polyclonal
Source	Histone H3 [ac Lys27] affinity purified antibody was prepared from whole rabbit serum produced by repeated immunizations with a synthetic peptide surrounding the K27ac site of human Histone H3.
Uniprot ID	Q71DI3
Entrez	547831
Dilution Range	ELISA: 1: 10,000, Immunoprecipitation: 1:100, Western Blot: 1:500-1:1000



Histone-H3-K27ac Dot Blot