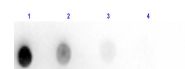


Product Datasheet

HORSE IgM mu chain (RABBIT) Antibody Peroxidase Conjugated GRP2897

Description	Anti-HORSE IgM mu chain (RABBIT) Antibody Peroxidase Conjugated
Species/Host	Rabbit
Reactivity	Horse
Conjugation	HRP
Tested Applications	ELISA, IHC-P, WB
Form/Appearance	0.02 M Potassium Phosphate, 0.15 M Sodium Chloride, pH 7.2
Concentration	10.0 mg/mL
Note	For research use only.
Isotype	IgG
Clonality	Polyclonal
Source	Horse IgM mu heavy chain
Dilution Range	ELISA: 1:10,000 - 1:50,000, Immunochemistry: 1:500 - 1:2,500, Western Blot: 1:1,000 - 1:10,000



Dot Blot of Anti-Horse IgM Antibody HRP Conjugated