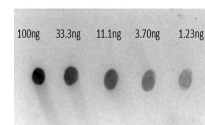


Product Datasheet

HUMAN IgG (gamma chain) (RABBIT) Antibody Alkaline Phosphatase Conjugated GRP4609

Description	Anti-HUMAN IgG (gamma chain) (RABBIT) Antibody Alkaline Phosphatase Conjugated
Species/Host	Rabbit
Reactivity	Human
Conjugation	AP
Tested Applications	ELISA, IHC-P, WB
Form/Appearance	0.05 M Tris Chloride, 0.15M Sodium Chloride, 0.001M Magnesium Chloride, 0.0001M Zinc Chloride, 50% (v/v) Glycerol; pH 8.0
Concentration	1.0 mg/mL
Storage	Store vial at 4 °C before opening. DO NOT FREEZE. This product is stable at 4 °C as an undiluted liquid. Dilute only prior to immediate use. Freezing alkaline phosphatase conjugates will result in a substantial loss of enzymatic activity.
Note	For research use only.
Isotype	IgG
Clonality	Polyclonal
Source	Human IgG gamma heavy chain
Dilution Range	ELISA: 1:10,000 - 1:20,000, Immunochemistry: 1:200 - 1:1,000, Western Blot: 1:500 - 1:2,500



Dot Blot of Rabbit Anti-Human IgG gamma chain Alkaline Phosphatase Conjugated Antibody.