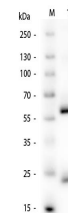


Product Datasheet

HUMAN IgG (H&L) (MOUSE) Antibody GRP4567

Description	Anti-HUMAN IgG (H&L) (MOUSE) Antibody
Species/Host	Mouse
Reactivity	Human
Conjugation	Unconjugated
Tested Applications	ELISA, IHC-P, WB
Form/Appearance	0.02 M Potassium Phosphate, 0.15 M Sodium Chloride, pH 7.2
Concentration	1.0 mg/mL
Note	For research use only.
Isotype	IgG
Clonality	Polyclonal
Source	Human IgG whole molecule
Dilution Range	ELISA: 1:5,000 - 1:50,000,Immunochemistry: 1:1,000 - 1:5,000,Western Blot: 1:500 - 1:5,000
Application Notes	Mouse Anti-Human IgG (H&L) is suitable for use in immunoelectrophoresis, western-blot, competitive western-blot, ELISA and competitive ELISA assays. Specific conditions for reactivity and signal detection should be optimized by the end user.



Human IgG Antibody -
Western
Blot