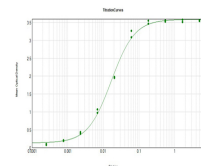


Product Datasheet

HUMAN IgG (H&L) (SHEEP) Antibody GRP4630

Description	Anti-HUMAN IgG (H&L) (SHEEP) Antibody
Species/Host	Sheep
Conjugation	Unconjugated
Tested Applications	ELISA, IHC-P, WB
Form/Appearance	0.02 M Potassium Phosphate, 0.15 M Sodium Chloride, pH 7.2
Concentration	2.1 mg/mL
Note	For research use only.
Isotype	IgG
Clonality	Polyclonal
Source	Human IgG whole molecule
Dilution Range	ELISA: 1:30,000 - 1:60,000, Immunochemistry: 1:1,000 - 1:5,000, Western Blot: 1:5,000 - 1:20,000
Application Notes	Anti-Human IgG antibody is suitable for ELISA, western blot, and immunohistochemistry, as well as other assays requiring lot-to-lot consistency.



ELISA Results of Sheep
Anti-Human IgG Antibody