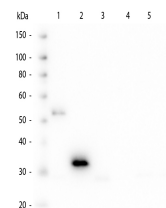


Product Datasheet

HUMAN IgG F(c) (MOUSE) Antibody GRP2913

Description	Anti-HUMAN IgG F(c) (MOUSE) Antibody
Species/Host	Mouse
Reactivity	Human
Conjugation	Unconjugated
Tested Applications	ELISA, WB
Form/Appearance	0.02 M Potassium Phosphate, 0.15 M Sodium Chloride, pH 7.2
Concentration	1.0 mg/ml
Note	For research use only.
Isotype	IgG1
Clonality	Monoclonal
Source	Anti-Human IgG F(c) monoclonal antibody was produced by repeated immunization with Human IgG F(c) fragment in mice.
Clone ID	3D8.H7.D4
Dilution Range	ELISA: 1-:1000-1:10000,Western Blot: 1:1000 - 1:2000
Application Notes	Human IgG F(c) antibody is suitable for immunoelectrophoresis, western-blot, competitive western-blot, ELISA and competitive ELISA assays. Specific conditions for reactivity and signal detection should be optimized by the end user.



Human Fc Monoclonal
Antibody