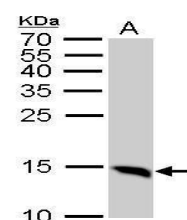


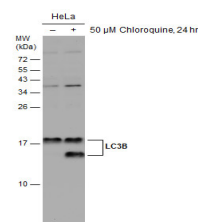
Product Datasheet

LC3B antibody GRP69

Description	The product of this gene is a subunit of neuronal microtubule-associated MAP1A and MAP1B proteins, which are involved in microtubule assembly and important for neurogenesis. Studies on the rat homolog implicate a role for this gene in autophagy, a process that involves the bulk degradation of cytoplasmic component. [provided by RefSeq]
Species/Host	Rabbit
Reactivity	Human, Mouse, Rat, Pig
Conjugation	Unconjugated
Tested Applications	FACS, ICC, IF, IHC-Fr, IHC-P, IP, WB
Immunogen	Carrier-protein conjugated synthetic peptide encompassing a sequence within the N-terminus region of human LC3B. The exact sequence is proprietary.
Form/Appearance	Liquid: 1XPBS, 1% BSA, 20% Glycerol (pH7). 0.025% ProClin 300 was added as a preservative.
Concentration	0.14 mg/ml
Storage	Store as concentrated solution. Centrifuge briefly prior to opening vial. For short-term storage (1-2 weeks), store at 4°C. For long-term storage, aliquot and store at -20°C or below. Avoid multiple freeze-thaw cycles.
Note	For research use only.
Isotype	IgG
Clonality	Polyclonal
Purity	Purified by antigen-affinity chromatography.
Uniprot ID	Q9GZQ8
Entrez	81631
Dilution Range	WB: 1:500-1:3000, ICC: 1:100-1:1000, IHC-P: 1:100-1:1000, FACS: 1:50-1:200, IP: 1:100-1:500



LC3B antibody detects MAP1LC3B protein by western blot analysis. A. 50 µg Rat brain lysate/extract 15% SDS-PAGE LC3B antibody (GRP521) dilution: 1:1000 The HRP-conjugated anti-rabbit IgG antibody was used to detect the primary antibody.



Untreated (â€“) and treated (+) HeLa whole cell extracts (30 µg) were separated by 15% SDS-PAGE, and the membrane was blotted with LC3B antibody (GRP521) diluted at 1:2500. The HRP-conjugated anti-rabbit IgG antibody was used to detect the primary ant