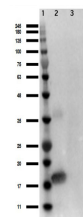


## Product Datasheet

### Human IL-1 alpha (RABBIT) Antibody GRP2936

|                            |   |
|----------------------------|---|
| <b>Description</b>         | Anti-Human IL-1 alpha (RABBIT) Antibody   |
| <b>Species/Host</b>        | Rabbit  |
| <b>Reactivity</b>          | Human   |
| <b>Conjugation</b>         | Unconjugated  |
| <b>Tested Applications</b> | ELISA, FC, IHC-P, WB  |
| <b>Form/Appearance</b>     | 0.02 M Potassium Phosphate, 0.15 M Sodium Chloride, pH 7.2  |
| <b>Concentration</b>       | 1.0 mg/mL   |
| <b>Note</b>                | For research use only.  |
| <b>Isotype</b>             | IgG   |
| <b>Clonality</b>           | Polyclonal  |
| <b>Uniprot ID</b>          | <b>P01583</b>   |
| <b>Entrez</b>              | <a href="https://www.ncbi.nlm.nih.gov/gene//3552">https://www.ncbi.nlm.nih.gov/gene//3552</a>   |
| <b>Dilution Range</b>      | ELISA: 1:1,000 - 1:5,000, Flow Cytometry: User Optimized, Immunocytochemistry: 1:100 to 1:200, Western Blot: 1:500 - 1:2,000  |
| <b>Application Notes</b>   | This IgG fraction antibody of anti-Human IL-1a has been tested for use in neutralizations, ELISA, immunohistochemistry, flow cytometry and immunoblotting. It recognizes the 17,000 MW mature IL-1a. Reactivity in other immunoassays is unknown. |



Western Blot of Rabbit  
Anti-Human IL-1 alpha  
Antibody