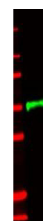


## Product Datasheet

# Human IL-1 Receptor Type II (IL-1RII) (RABBIT) Antibody GRP1732

<b>Species/Host</b>	Rabbit
<b>Reactivity</b>	Human, Primate
<b>Conjugation</b>	Unconjugated
<b>Tested Applications</b>	ELISA, IP, WB
<b>Form/Appearance</b>	0.02 M Potassium Phosphate, 0.15 M Sodium Chloride, pH 7.2
<b>Concentration</b>	85 mg/mL
<b>Note</b>	For research use only.
<b>Isotype</b>	Antiserum
<b>Clonality</b>	Polyclonal
<b>Source</b>	This whole rabbit serum was prepared by repeated immunizations with recombinant human IL-1R type II.
<b>Uniprot ID</b>	<b>P27930</b>
<b>Entrez</b>	<a href="https://www.ncbi.nlm.nih.gov/gene//7850">https://www.ncbi.nlm.nih.gov/gene//7850</a>
<b>Dilution Range</b>	ELISA: 1:1,000 - 1:2,000, Immunoprecipitation: 1:400 - 1:800, Western Blot: 1:500 - 1:2,000



Anti-IL-1RII Antibody -  
Western Blot