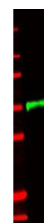


Product Datasheet

Human IL-1 Receptor Type II (IL-1RII) (RABBIT) Antibody GRP1734

Species/Host	Rabbit
Reactivity	Human, Primate
Conjugation	Unconjugated
Tested Applications	ELISA, IP, WB
Form/Appearance	0.02 M Potassium Phosphate, 0.15 M Sodium Chloride, pH 7.2
Concentration	85 mg/mL
Note	For research use only.
Isotype	Antiserum
Clonality	Polyclonal
Source	This whole rabbit serum was prepared by repeated immunizations with recombinant human IL-1R type II.
Uniprot ID	P27930
Entrez	https://www.ncbi.nlm.nih.gov/gene//7850
Dilution Range	ELISA: 1:1,000 - 1:2,000, Immunoprecipitation: 1:400 - 1:800, Western Blot: 1:500 - 1:2,000



Anti-IL-1RII Antibody -
Western Blot