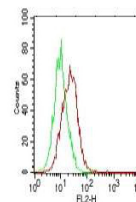


## Product Datasheet

# Human IL-17E (MOUSE) Biotin Conjugated Monoclonal Antibody GRP2933

|                            |  |
|----------------------------|--|
| <b>Description</b>         | Anti-Human IL-17E (MOUSE) Biotin Conjugated Monoclonal Antibody  |
| <b>Species/Host</b>        | Mouse  |
| <b>Reactivity</b>          | Human  |
| <b>Conjugation</b>         | Biotin   |
| <b>Tested Applications</b> | ELISA, FC, WB  |
| <b>Form/Appearance</b>     | 0.02 M Potassium Phosphate, 0.15 M Sodium Chloride, pH 7.2   |
| <b>Concentration</b>       | 1.0 mg/mL  |
| <b>Note</b>                | For research use only.   |
| <b>Isotype</b>             | IgG1   |
| <b>Clonality</b>           | Monoclonal   |
| <b>Source</b>              | Anti-IL-17E (MOUSE) Monoclonal Antibody was produced in mouse by repeated immunizations with mature full length recombinant human IL-17E produced in E.coli followed by hybridoma development. |
| <b>Clone ID</b>            | 11K8B1   |
| <b>Uniprot ID</b>          | <b>Q9H293</b>  |
| <b>Entrez</b>              | <a href="https://www.ncbi.nlm.nih.gov/gene//64806">https://www.ncbi.nlm.nih.gov/gene//64806</a>  |
| <b>Dilution Range</b>      | ELISA: 1:10,000-1:50,000, Flow Cytometry: 1µg /mL, Fluorochrome: 10-20, Western Blot: 0.5µg /mL  |
| <b>Application Notes</b>   | This purified antibody has been tested for use in Flow Cytometry and western blotting. Specific conditions for reactivity should be optimized by the end user.                                 |



Anti-IL-17E Biotin Conjugated Antibody - Flow Cytometry