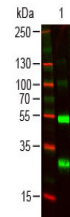


## Product Datasheet

### HUMAN ? (lambda chain) (GOAT) Antibody GRP4517

<b>Description</b>	Anti-HUMAN $\lambda$ (lambda chain) (GOAT) Antibody
<b>Species/Host</b>	Goat
<b>Reactivity</b>	Human
<b>Conjugation</b>	Unconjugated
<b>Tested Applications</b>	ELISA, IHC-P, WB
<b>Form/Appearance</b>	0.125 M Sodium Borate, 0.075 M Sodium Chloride, 0.005 M EDTA, pH 8.0
<b>Concentration</b>	1.0 mg/mL
<b>Note</b>	For research use only.
<b>Isotype</b>	IgG
<b>Clonality</b>	Polyclonal
<b>Source</b>	Anti-Human lambda light chain antibody was produced by repeated immunization with Human lambda light chain molecule in goat.
<b>Dilution Range</b>	ELISA: 1:4,000 - 1:20,000, Immunochemistry: 1:1,000 - 1:5,000, Western Blot: 1:500 - 1:2,000
<b>Application Notes</b>	This secondary antibody anti-Human is ideal for investigators who routinely perform ELISA, Sandwich ELISA, titration assays, western-blot, immunoprecipitation and more generally immunoassays.



Human ? (lambda chain)  
Antibody Western Blot