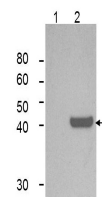


Product Datasheet

IDO1 (MOUSE) Monoclonal Antibody GRP2113

Description	Anti-IDO1 (MOUSE) Monoclonal Antibody
Species/Host	Mouse
Reactivity	Human, Mouse
Conjugation	Unconjugated
Tested Applications	ELISA, IF, IHC-P, IP, WB
Form/Appearance	0.02 M Potassium Phosphate, 0.15 M Sodium Chloride, pH 7.2
Concentration	1.0 mg/mL
Note	For research use only.
Isotype	IgG3
Clonality	Monoclonal
Source	Anti-IDO1 (MOUSE) Monoclonal Antibody was produced in mouse by repeated immunizations with fragment of recombinant human and mouse IDO1 protein followed by hybridoma development.
Clone ID	10.1
Uniprot ID	P14902
Entrez	https://www.ncbi.nlm.nih.gov/gene//3620
Dilution Range	ELISA: 1:5000-1:50000, Immunochimistry: 1:100-1:500, IF Microscopy: 1:50-1:100, Immunoprecipitation: 10-100 µL, Western Blot: 1:500-1:1500
Application Notes	Anti-IDO1 antibody has been tested for use in ELISA, Western Blot, IP, IHC, and Flow Cytometry. Specific conditions for reactivity should be optimized by the end user.



Western Blot - IDO1
Antibody