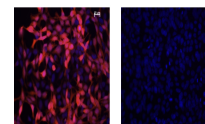


Product Datasheet

IDO1 (MOUSE) Monoclonal Antibody GRP3054

Description	Anti-IDO1 (MOUSE) Monoclonal Antibody
Species/Host	Mouse
Reactivity	Mouse
Conjugation	Unconjugated
Tested Applications	ELISA, FC, IF, IHC-P, IP, WB
Form/Appearance	0.02 M Potassium Phosphate, 0.15 M Sodium Chloride, pH 7.2
Concentration	1.0 mg/mL
Note	For research use only.
Isotype	IgG1
Clonality	Monoclonal
Source	IDO1 antibody was produced in mouse by repeated immunizations with mouse recombinant IDO1 protein followed by hybridoma development.
Clone ID	2E2.6
Uniprot ID	P28776
Entrez	https://www.ncbi.nlm.nih.gov/gene//15930
Dilution Range	ELISA: 1:5000-1:50000, Flow Cytometry: 0.5-1x10 ⁶ cells, Immunocytochemistry: User optimized, IF Microscopy: 1:50-1:100, Immunoprecipitation: 10-100 µL, Western Blot: 1:500-1:1500
Application Notes	Anti-IDO1 antibody has been tested for use in ELISA, Western Blot, IF, IHC, and Flow Cytometry. Specific conditions for reactivity should be optimized by the end user.



Immunofluorescence -
IDO1
Antibody