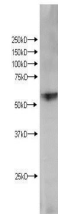


## Product Datasheet

### KMO (RABBIT) Antibody GRP3872

<b>Description</b>	Anti-KMO (RABBIT) Antibody
<b>Species/Host</b>	Rabbit
<b>Reactivity</b>	Human, Mouse
<b>Conjugation</b>	Unconjugated
<b>Tested Applications</b>	ELISA, IF, IHC-P, WB
<b>Form/Appearance</b>	0.02 M Potassium Phosphate, 0.15 M Sodium Chloride, pH 7.2
<b>Concentration</b>	1.02 mg/ml
<b>Note</b>	For research use only.
<b>Isotype</b>	IgG
<b>Clonality</b>	Polyclonal
<b>Source</b>	KMO affinity purified antibody was prepared from whole rabbit serum produced by repeated immunizations with a synthetic peptide corresponding to an internal region surrounding 300-400aa of the mouse KMO chain.
<b>Uniprot ID</b>	<b>O15229</b>
<b>Entrez</b>	<a href="https://www.ncbi.nlm.nih.gov/gene//8564">https://www.ncbi.nlm.nih.gov/gene//8564</a>
<b>Dilution Range</b>	ELISA: 1:20,000 - 1:60,000, Immunochemistry: 1:100-1:500, IF Microscopy: 1:100-1:500, Western Blot: 1 µg /ml
<b>Application Notes</b>	Anti-KMO antibody is useful for ELISA and Western Blot. Specific conditions for reactivity should be optimized by the end user. Expect a band approximately ~58 kDa corresponding to the appropriate cell lysate or extract.



Anti-KMO Western Blot