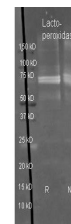


Product Datasheet

LACTOPEROXIDASE (Bovine Milk) (SHEEP) Antibody GRP2731

Description	Anti-LACTOPEROXIDASE (Bovine Milk) (SHEEP) Antibody
Species/Host	Sheep
Reactivity	Bovine
Conjugation	Unconjugated
Tested Applications	ELISA, IP, WB
Form/Appearance	0.02 M Potassium Phosphate, 0.15 M Sodium Chloride, pH 7.2
Note	For research use only.
Isotype	IgG
Clonality	Polyclonal
Source	Lactoperoxidase [Bovine Milk]
Uniprot ID	P80025
Entrez	https://www.ncbi.nlm.nih.gov/gene//280844
Dilution Range	ELISA: 1:5,000 - 1:20,000, Immunoprecipitation: 1:100, Western Blot: 1:500 - 1:5,000



Lactoperoxidase
Polyclonal
Antibody-Western blot