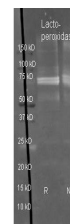


Product Datasheet

LACTOPEROXIDASE (Bovine Milk) (SHEEP) Antibody Biotin GRP2757

Description	Anti-LACTOPEROXIDASE (Bovine Milk) (SHEEP) Antibody Biotin
Species/Host	Sheep
Reactivity	Bovine
Conjugation	Biotin
Tested Applications	ELISA, IP, WB
Form/Appearance	0.02 M Potassium Phosphate, 0.15 M Sodium Chloride, pH 7.2
Concentration	1.0 mg/mL
Note	For research use only.
Isotype	IgG
Clonality	Polyclonal
Source	Lactoperoxidase [Bovine Milk]
Uniprot ID	P80025
Entrez	https://www.ncbi.nlm.nih.gov/gene//280844
Dilution Range	ELISA: 1:500 - 1:2,000, Immunoprecipitation: 1:100, Western Blot: 1:50 - 1:500



Lactoperoxidase
Polyclonal
Antibody-Western blot