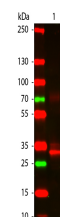


## Product Datasheet

### L-ASPARAGINASE (RABBIT) Antibody GRP1652

<b>Description</b>	L-asparaginase from E.coli has two isoenzymes: L-asparaginase I, a low-affinity enzyme located in the cytoplasm, and L-asparaginase II, a high-affinity secreted enzyme.
<b>Species/Host</b>	Rabbit
<b>Reactivity</b>	E.Coli
<b>Conjugation</b>	Unconjugated
<b>Tested Applications</b>	ELISA, IHC-P, WB
<b>Form/Appearance</b>	0.02 M Potassium Phosphate, 0.15 M Sodium Chloride, pH 7.2
<b>Concentration</b>	65 mg/mL
<b>Note</b>	For research use only.
<b>Isotype</b>	Antiserum
<b>Clonality</b>	Polyclonal
<b>Source</b>	Asparaginase [Escherichia coli]
<b>Uniprot ID</b>	<b>P00805</b>
<b>Entrez</b>	<a href="https://www.ncbi.nlm.nih.gov/gene//1039460">https://www.ncbi.nlm.nih.gov/gene//1039460</a>
<b>Dilution Range</b>	ELISA: 1:20,000 - 1:100,000, Immunochemistry: User Optimized, Western Blot: 1:2,000 - 1:10,000
<b>Application Notes</b>	Anti-L-asparaginase is suitable for use in ELISA, western blot, and immunohistochemistry. Specific conditions for reactivity should be optimized by the end user.



L-Asparaginase Antibody - Western Blot