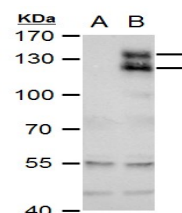


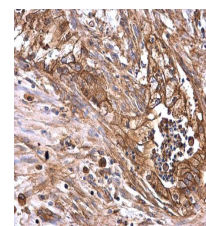
Product Datasheet

AXL antibody GRP74

Description	The protein encoded by this gene is a member of the receptor tyrosine kinase subfamily. Although it is similar to other receptor tyrosine kinases, this protein represents a unique structure of the extracellular region that juxtaposes IgL and FNIII repeats. It transduces signals from the extracellular matrix into the cytoplasm by binding growth factors like vitamin K-dependent protein growth-arrest-specific gene 6. It is involved in the stimulation of cell proliferation and can also mediate cell aggregation by homophilic binding. Alternatively spliced transcript variants encoding different isoforms have been identified. [provided by RefSeq]
Species/Host	Rabbit
Reactivity	Human, Mouse
Conjugation	Unconjugated
Tested Applications	ELISA, IHC-P, WB
Immunogen	Recombinant protein encompassing a sequence within the center region of human AXL. The exact sequence is proprietary.
Form/Appearance	Liquid: 1XPBS, 20% Glycerol (pH7). 0.025% ProClin 300 was added as a preservative.
Concentration	0.63 mg/ml
Storage	Store as concentrated solution. Centrifuge briefly prior to opening vial. For short-term storage (1-2 weeks), store at 4°C. For long-term storage, aliquot and store at -20°C or below. Avoid multiple freeze-thaw cycles.
Note	For research use only.
Isotype	IgG
Clonality	Polyclonal
Purity	Purified by antigen-affinity chromatography.
Uniprot ID	P30530
Entrez	558
Dilution Range	WB: 1:500-1:3000, IHC-P: 1:100-1:1000, ELISA: 1:-1:10000



AXL antibody detects AXL protein by western blot analysis. A. 30 µg 293T whole cell extract. B. 30 µg whole cell extract of human AXL-transfected 293T cells. 7.5% SDS-PAGE AXL antibody (GRP526) dilution: 1:5000



AXL antibody detects AXL protein at membrane on human colon carcinoma by immunohistochemical analysis. Sample: Paraffin-embedded human colon carcinoma. AXL antibody (GRP526) dilution: 1:500.