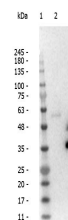


Product Datasheet

LLAMA IgG2 (RABBIT) Antibody GRP5390

Description	Anti-LLAMA IgG2 (RABBIT) Antibody
Species/Host	Rabbit
Reactivity	Llama
Conjugation	Unconjugated
Tested Applications	ELISA, IHC-P, WB
Form/Appearance	0.01 M Sodium Phosphate, 0.25 M Sodium Chloride, pH 7.2
Concentration	1.07 mg/ml
Storage	Store vial at -20 °C prior to opening. This product is stable at 4 °C as an undiluted liquid. For extended storage, aliquot contents and freeze at -20 °C or below. Avoid cycles of freezing and thawing. Dilute only prior to immediate use.
Note	For research use only.
Isotype	IgG
Clonality	Polyclonal
Source	Llama IgG2
Dilution Range	ELISA: 1:60,000,Immunochemistry: User Optimized,Western Blot: 1:20,000-1:40,000
Application Notes	Antibody Anti-Llama IgG2 is suitable for immunoblotting (western or dot blot), ELISA, and immunohistochemistry assays requiring lot-to-lot consistency.



Western blot of anti-Llama IgG2 antibody