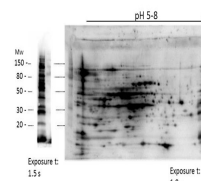


## Product Datasheet

# Low Molecular Weight E.Coli Protein Host Cell Protein (HCP) Antibody GRP1600

<b>Species/Host</b>	Rabbit
<b>Reactivity</b>	E.Coli
<b>Conjugation</b>	Unconjugated
<b>Tested Applications</b>	ELISA, WB
<b>Form/Appearance</b>	0.02 M Potassium Phosphate, 0.15 M Sodium Chloride, pH 7.2
<b>Concentration</b>	72.5 mg/mL
<b>Note</b>	For research use only.
<b>Isotype</b>	Antiserum
<b>Clonality</b>	Polyclonal
<b>Source</b>	Anti-LMW E.Coli Host Cell Proteins Antibody was prepared by repeated immunizations with a mixture low molecular weight (LMW) proteins from E.Coli (BL21).
<b>Dilution Range</b>	ELISA: 1:1000-1:2000,Western Blot: 1:500 - 1:1000
<b>Application Notes</b>	Anti-LMW Host Cell Proteins Antibody detects over 270 E.coli LMW proteins and is suitable for western blotting and ELISA.



2D Western Blot of  
Anti-LMW-HCP Antibody