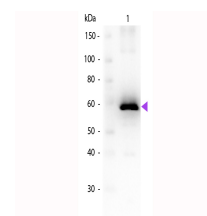


Product Datasheet

LUCIFERASE (GOAT) Antibody GRP1860

| | |
|----------------------------|--|
| Species/Host | Goat |
| Reactivity | Firefly |
| Conjugation | Unconjugated |
| Tested Applications | ELISA, IF, IHC-P, WB |
| Form/Appearance | 0.02 M Potassium Phosphate, 0.15 M Sodium Chloride, pH 7.2 |
| Concentration | 1.0 mg/ml |
| Note | For research use only. |
| Isotype | IgG |
| Clonality | Polyclonal |
| Source | Luciferase [Photinus pyralis (Firefly)] |
| Dilution Range | ELISA: 1:200 - 1:1000, Immunochemistry: 1:1,000 - 1:5,000, IF Microscopy: 20 µg /mL, Western Blot: 1:1000 - 1:5000 |
| Application Notes | Suitable for immunoblotting (western or dot blot), ELISA, immunoprecipitation, immunocytochemistry, and most immunological methods requiring high titer and specificity. |



WB - Luciferase Antibody