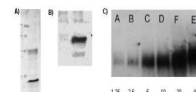


## Product Datasheet

### Lysine Acetylated (AcK) (RABBIT) Antibody GRP3550

<b>Description</b>	Anti-Lysine Acetylated (AcK) (RABBIT) Antibody
<b>Species/Host</b>	Rabbit
<b>Reactivity</b>	Mouse
<b>Conjugation</b>	Unconjugated
<b>Tested Applications</b>	ELISA, FC, IF, IHC-P, IP, WB
<b>Form/Appearance</b>	0.02 M Potassium Phosphate, 0.15 M Sodium Chloride, pH 7.2
<b>Concentration</b>	1.0 mg/ml
<b>Note</b>	For research use only.
<b>Isotype</b>	IgG
<b>Clonality</b>	Polyclonal
<b>Source</b>	Anti-Lysine Acetylated Antibody was prepared from whole rabbit serum produced by repeated immunizations with acetylated lysine conjugated KLH.
<b>Dilution Range</b>	ELISA: 1:1,000-1:2,500, Flow Cytometry: User Optimized, Immunocytochemistry: User Optimized, IF Microscopy: User Optimized, Immunoprecipitation: 10 µg /mg protein sample, Western Blot: 1:500-1:1,000
<b>Application Notes</b>	Anti-Lysine Acetylated Antibody is suitable for use in ELISA, western blotting, immunofluorescence microscopy, and immunoprecipitation assays. Although not tested, this antibody is likely functional in RIA, flow cytometry, and immunohistochemistry.



Anti-Acetylated Lysine (AcK) Antibody - Western Blot